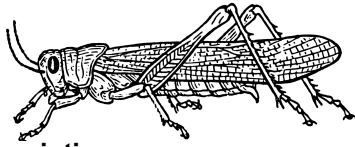


Welcome to Zoology!



Mrs. Dostal
Room 227/210

Description

In this class, students explore the animal kingdom over the course of 9 weeks. Students will compare and contrast how organisms accomplish life functions (feeding, waste removal, gas exchange, body structure, and more). Dissection and other laboratory components will be utilized.

Goals

- Apply and increase knowledge in mathematics, science, and language arts.
- Design and conduct experiments; collect, interpret, and analyze resulting data.

Materials

- 3-ring binder or folder for only this class
- notebook paper
- Pencil or Blue/Black Pen
- Open Mind

Classroom Expectations

1. Students will treat everyone in the class with respect.
2. Students will be in their assigned seats and ready for class when the bell rings.
3. Students will follow classroom procedures and lab safety rules.

Behavior Consequences

verbal praise	warning
treats	conference
phone call or note home	phone call or note home
PBIS rewards	detention

Tentative Timeline

Week 1	Introduction and Lab Safety
Week 2	Taxonomy and Classification
Week 3	Anatomical Terms of Position and the Language of Zoology
Week 4	Phylum Porifera & Phylum Cnidaria
Week 5	Phylum Platyhelminthes, Phylum Nematoda & Phylum Annelida
Week 6	Phylum Arthropoda
Week 7	Phylum Mollusca & Phylum Echinodermata
Week 8	Phylum Chordata
Week 9	Phylum Chordata



Other Things You May Be Wondering About

Homework

Homework will NOT be assigned every night. Assignments not finished during class time should be completed for homework. I use your work to check for understanding. We will generally go over the answers together. Therefore, it is important the homework is finished BEFORE we go over the answers. Late assignments will be accepted for only partial credit once the assessment (quiz, test or project) over that material has been taken.

Responsibility

A weekly calendar is posted in the classroom and on Google Classroom (join with 6lfrqmc). The calendar includes reminders for important information, such as due dates. I recommend copying the calendar into your planner so that you have access to the calendar at all times. If you must be absent from class, make sure you obtain your missed work or class notes as soon as you return; Google Classroom may be used for some work. NO make-up work will be completed during class time. Sometimes missing school means missing activities that cannot be replicated outside of a classroom. If this is the case, the student will be excluded from the assignment. **This is NOT an online class.**