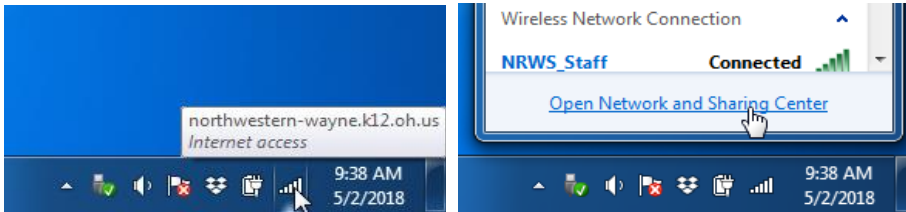


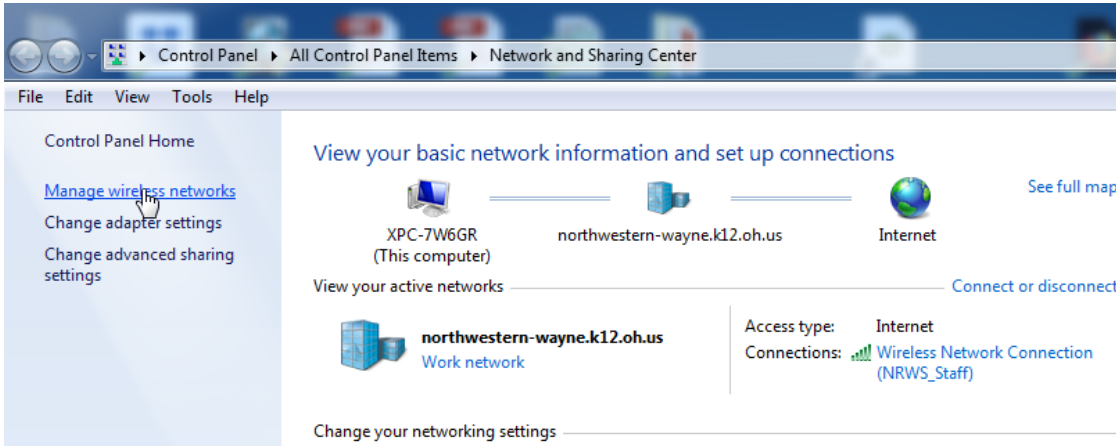
Windows 7 will not connect to NRWS_Staff WiFi

Windows 7 may fail to connect to the staff wifi. If you have any issues with this try the following steps.

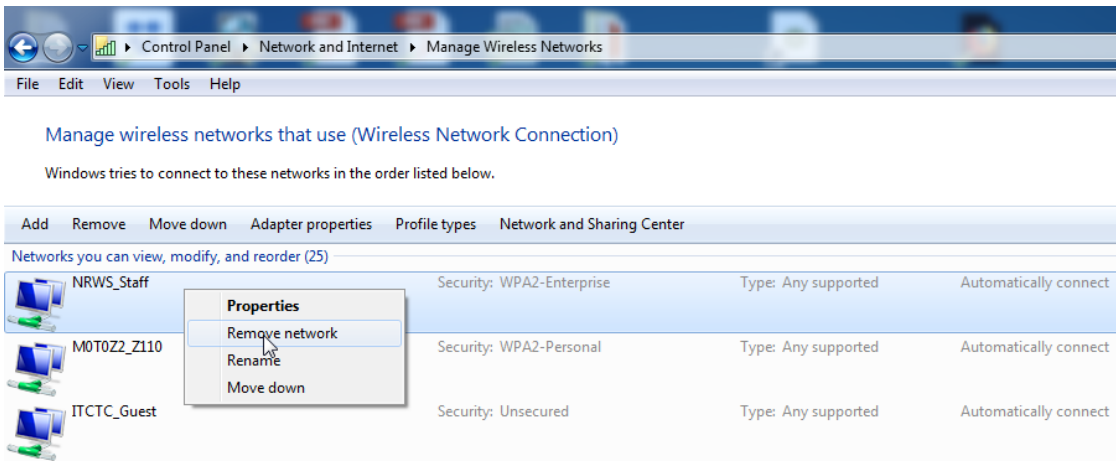
Open Network and Sharing Center by first left clicking on the wifi network icon



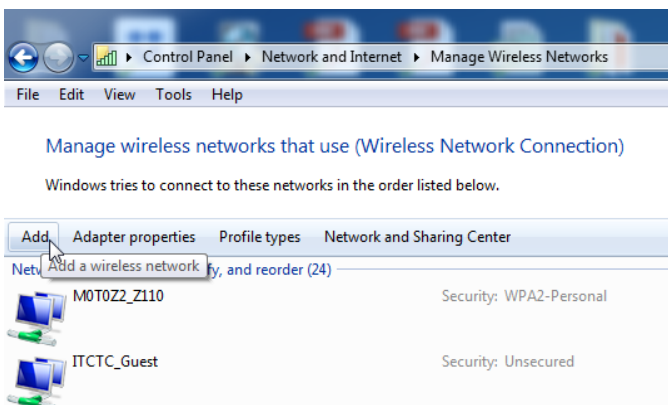
Click Manage wireless networks



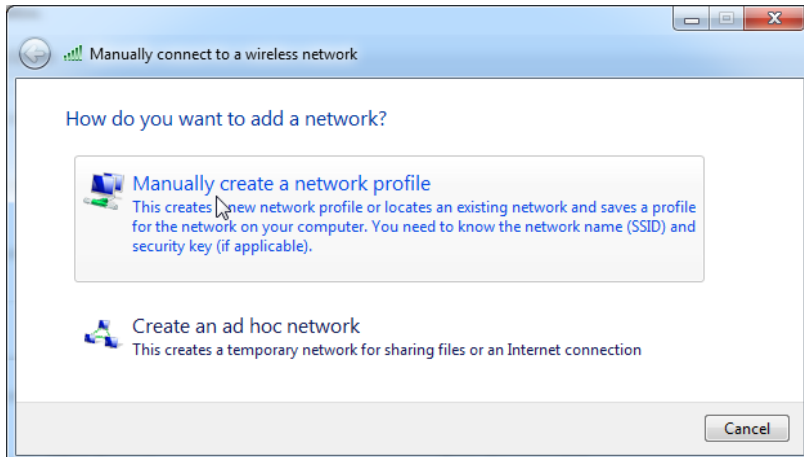
If the NRWS_Staff network is on the list, right click on it and choose Remove network or highlight and click Remove from the options above.



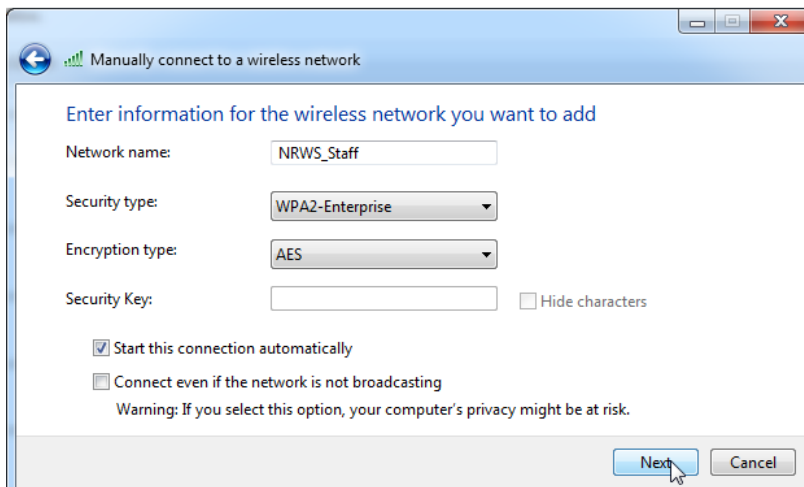
Click Add



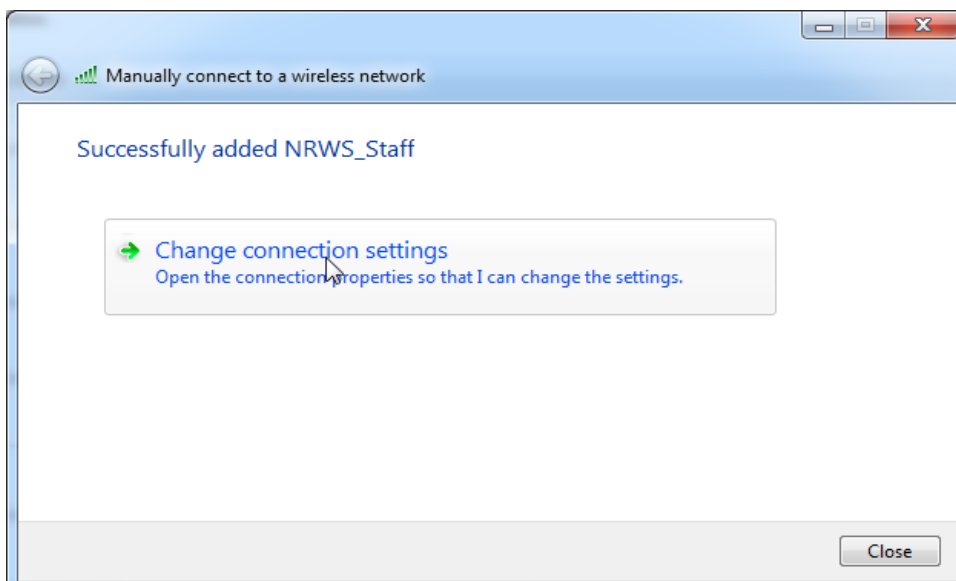
Click on Manually create a network profile



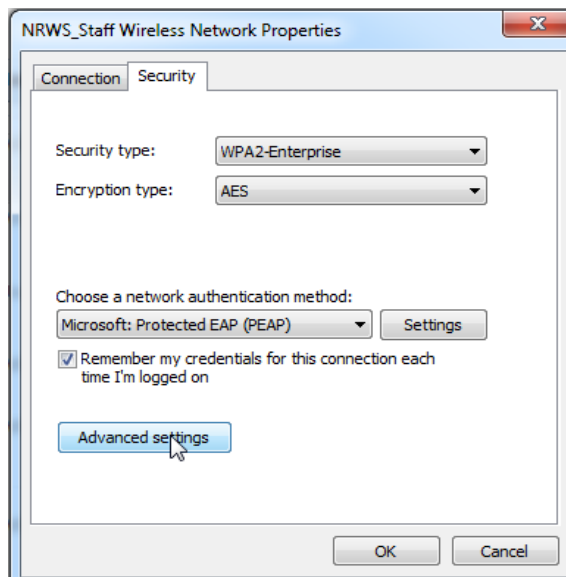
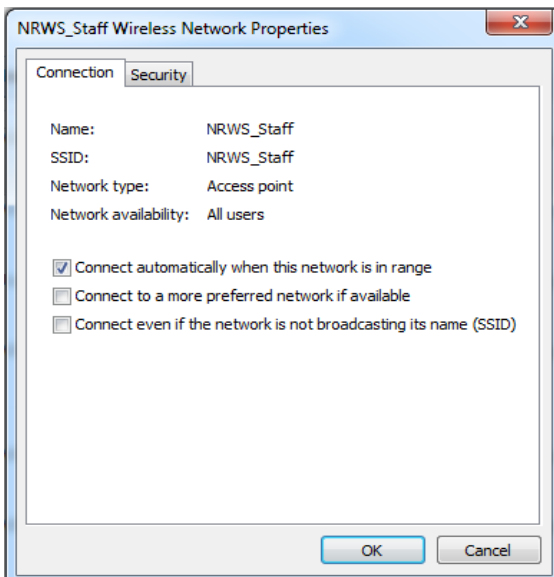
Enter settings as shown and click Next. Network name MUST be NRWS_Staff



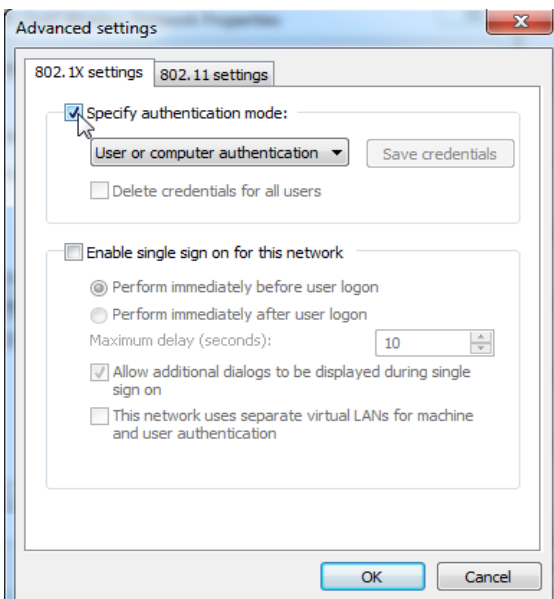
Click on Change connection settings



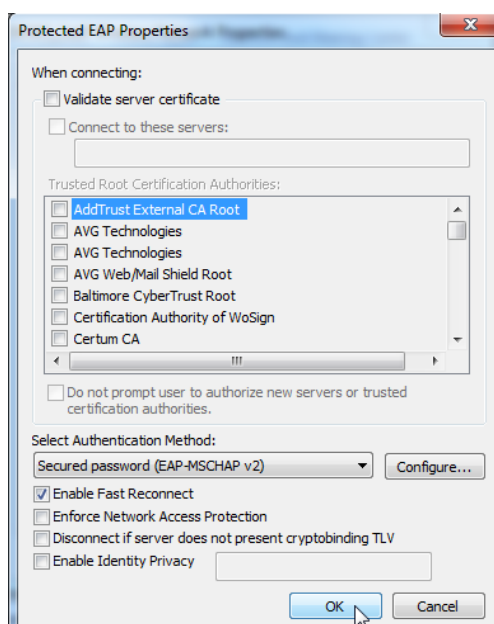
Click the Security tab then click Advanced settings



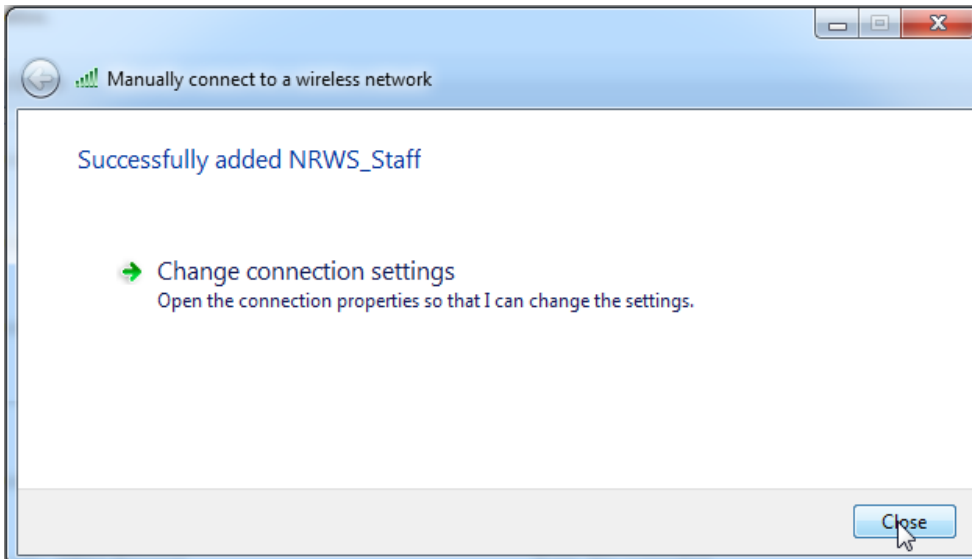
On the 802.1X settings tab make sure Specify authentication mode is checked, set dropdown as shown and click OK



Click Settings next to authentication method then make sure Validate server certificate is unchecked. Click OK



Click Close



NRWS_Staff should now connect and prompt you for authentication. Enter your TCCSA username and password as shown

