

# Welcome to Advanced Science 8!



Mrs. Dostal  
Room 227

## **Description**

In this class, students use scientific inquiry to discover patterns, trends, structures and relationships that may be inferred from scientific principles. These principles are related to the physical features of the Earth, the organisms that inhabit Earth and force and motion within, on and around Earth and the universe.

## **Goals**

- Apply and increase knowledge in mathematics, science, and language arts.
- Design and conduct experiments; collect, interpret, and analyze resulting data.

## **Materials**

- 3-ring binder or folder for only this class
- Pencil or Blue/Black Pen
- textbook and notebook paper
- Open Mind

## **Classroom Expectations**

1. Students will treat everyone in the class with respect.
2. Students will be in their assigned seats and ready for class when the bell rings.
3. Students will follow classroom procedures and lab safety rules.

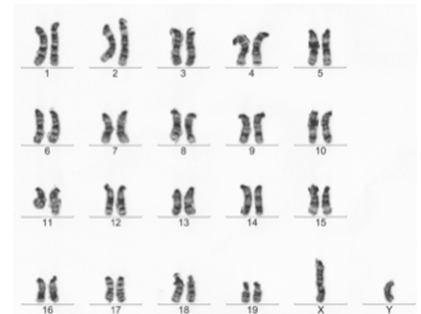
## **Behavior Consequences**

verbal praise  
treats  
phone call or note home  
PBIS rewards

warning  
conference  
phone call or note home  
detention

## **Topics**

Science and Technology  
Earth's Surface  
The Changing Earth  
Earth's History  
Reproduction and Heredity  
Life over Time  
Forces and Motion



## **Other Things You May Be Wondering About**

### *Homework*

Homework will NOT be assigned every night. Assignments not finished during class time should be completed for homework. I use your work to check for understanding. We will generally go over the answers together. Therefore, it is important the homework is finished BEFORE we go over the answers. Late assignments will be accepted for only partial credit once the assessment (quiz, test or project) over that material has been taken.

### *Responsibility*

A weekly calendar is posted in the classroom and on Google Classroom (join with 677hxik). The calendar includes reminders for important information, such as due dates. I recommend copying the calendar into your planner so that you have access to the calendar at all times. If you must be absent from class, make sure you obtain your missed work or class notes as soon as you return; Google Classroom may be used for some work. NO make-up work will be completed during class time. Sometimes missing school means missing activities that cannot be replicated outside of a classroom. If this is the case, the student will be excluded from the assignment. **This is NOT an online class.**